

Naval Complexes Meeting

January 28, 2019



TOLL PLAZA/GATEWAY PROJECT

DESIGN HISTORY:

- ROBERT MOSER WAS PRINCIPAL ARCHITECT FOR THE BRIDGE.
- BRIDGE WAS SUPPORTED BY THE NAVY PROVIDED IT HAD A 200' CLEARANCE TO ALLOW SHIPS TO PASS.
- IT WAS THE LONGEST CONTINUOUS BOX GIRDER BRIDGE IN THE WORLD UNTIL 2008.
- BRIDGE WAS NOT SUPPORTED BY CORONADO; AS A RESULT, THE LOCATION WAS DICTATED BY THE NAVY AND SAN DIEGO.
- BRIDGE LANDS IN CORONADO AT FOURTH STREET AND FORCES ALL NASNI-BOUND TRAFFIC THROUGH RESIDENTIAL NEIGHBORHOODS.



TOLL PLAZA/GATEWAY PROJECT

TOLL PLAZA HISTORY :

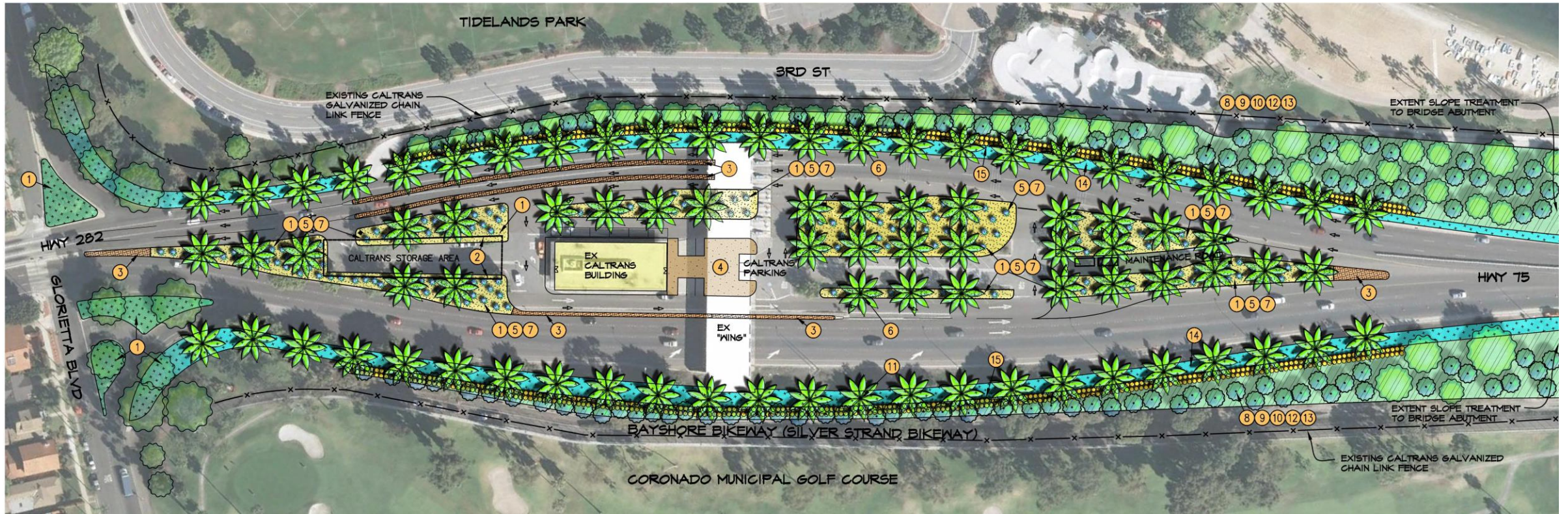
- BRIDGE OPENED AUGUST 3, 1969
- \$0.60 TOLL WAS COLLECTED EACH DIRECTION
 - LATER CHANGED TO \$1.00 FOR OUTBOUND TRAFFIC
- BONDS WERE PAID OFF IN 1986
- TOLLS WERE REMOVED ON JUNE 27, 2002



TOLL PLAZA/GATEWAY PROJECT

OPERATIONS HISTORY:

- TOLLS REMOVED IN JUNE 2002
- 2003 PROJECT STUDY REPORT RECOMMENDS CALMING IMPROVEMENTS
- NUMBER OF LANES REDUCED BY STRIPING AND DELINEATION UTILIZING CONSTRUCTION BARRELS AND DELINEATORS
- 2014 DROUGHT IS DECLARED; NON-ESSENTIAL IRRIGATION SHUT OFF



INITIAL TRAFFIC CALMING AND BEAUTIFICATION PROJECT

2011 - INITIAL CONCEPT DEVELOPED TO CALM TRAFFIC AND BEAUTIFY TOLL PLAZA

- \$800,000 ALLOCATED TO IMPROVEMENTS
- PUBLIC WORKSHOP CONDUCTED
 - TURNOUT VERY LOW
- CITY COUNCIL DIRECTED MORE PUBLIC INPUT REQUIRED



REVISED TRAFFIC CALMING AND BEAUTIFICATION PROJECT

2013 – REVISED CONCEPTUAL PLAN DEVELOPED

- TRAFFIC CALMING, OPERATIONAL NEEDS, AND REVISED PLANT PALETTE



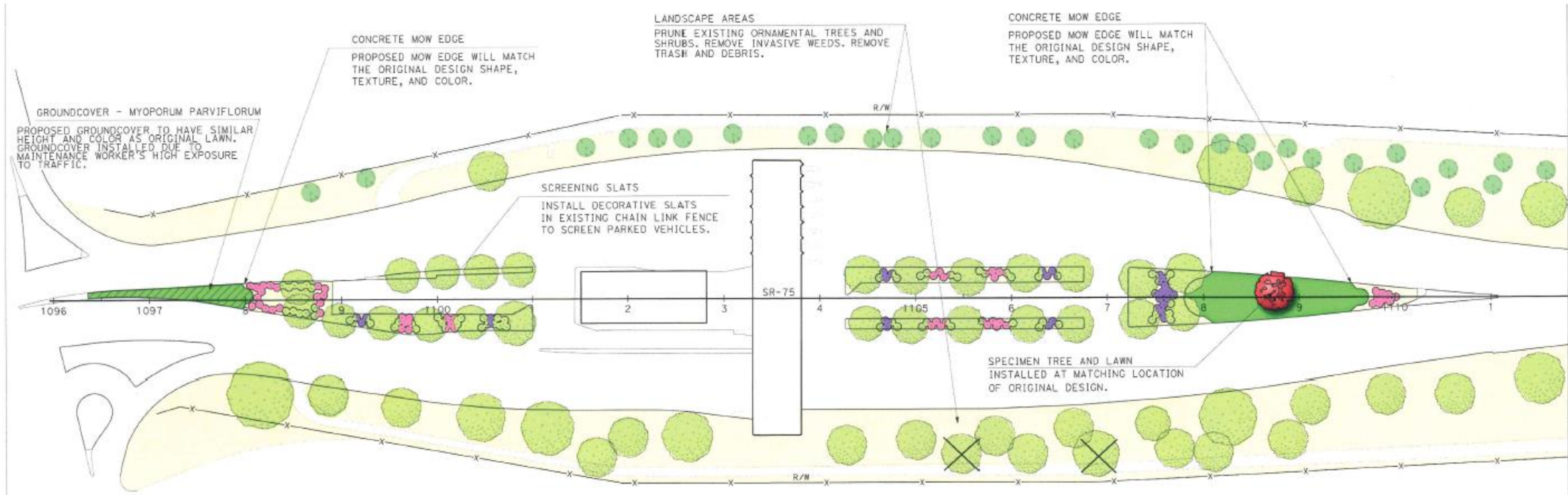
2016 – GATEWAY CONCEPT ADVANCED

- FOCUS ON TRAFFIC CALMING, SAFETY, AESTHETICS, PEDESTRIAN CROSSING, AND ACHIEVABILITY
- PROPOSED TO HAVE THREE PHASES:
 - EARLY MAINTENANCE
 - GATEWAY IMPROVEMENTS
 - PEDESTRIAN TUNNEL
- CALTRANS REVIEW INDICATED DIFFICULT PERMITTING ISSUES WITH DESIGN DUE TO THE HISTORICAL SIGNIFICANCE OF THE AREA (ELIGIBLE FOR HISTORIC DESIGNATION)



GATEWAY CONCEPT (CONTINUED)

- CALTRANS PROVIDED GUIDANCE ON IMPROVEMENTS THAT CAN BE INSTALLED WITH NO ADVERSE EFFECT (SIMPLIFY PERMIT)
- GATEWAY DESIGN REVISED IN ACCORDANCE TO CALTRANS GUIDANCE



GATEWAY – CURRENT STATUS

- CALTRANS HAS INITIATED LANDSCAPING PROJECT
 - FINAL PLANS UNDER DESIGN
 - IRRIGATION UPGRADES AND GRUBBING UNDERWAY AS A CHANGE ORDER TO ELECTRICAL UPGRADE FOR THE BRIDGE
 - PROJECT SCHEDULED TO BE COMPLETE BEFORE AUGUST 3, 2019, FOR THE FIFTY-YEAR ANNIVERSARY OF BRIDGE OPENING
- CITY'S GATEWAY PROJECT WILL CONTINUE TO BE REFINED AND PERMITTED TO INCLUDE TRAFFIC CALMING FEATURES NOT PROVIDED BY CALTRANS LANDSCAPE PROJECT